

AC INFINITY

IONBEAM

GROW LIGHT BAR SYSTEM

USER MANUAL

WELCOME

Thank you for choosing AC Infinity. We are committed to product quality and friendly customer service. If you have any questions or suggestions, please don't hesitate to [contact](#) us. Visit www.acinfinity.com and click contact for our contact information.

EMAIL

support@acinfinity.com

WEB

www.acinfinity.com

LOCATION

Los Angeles, CA

MANUAL CODE NE2201X1

PRODUCT

IONBEAM S11

IONBEAM S16

IONBEAM S16-UV

MODEL

AC-NES11

AC-NES16

AC-NEU16

UPC-A

819137023352

819137023369

819137023475

MANUAL INDEX

Manual Index	Page 5
Product Warning	Page 6
Key Features	Page 7
Product Contents	Page 8
Installation	Page 9
Programming	Page 16
Starter Guide	Page 17
Connecting to UIS™	Page 20
Other AC Infinity Products	Page 22
Warranty	Page 23

PRODUCT WARNING



TO REDUCE THE RISK OF FIRE, ELECTRIC SHOCK, OR INJURY TO PERSONS, OBSERVE THE FOLLOWING:

1. Ensure your power source conforms to the electrical requirements of this product.
2. Read all instructions before installing and using this product.
3. Be careful not to damage or cut the wire insulation (covering) during the installation. Do not permit wires to come in contact with any sharp edges.
4. If you are unfamiliar or have doubts about performing this product's installation, seek the services of a qualified, trained, and licensed professional. Inappropriate installation will void this product's warranty.
5. This product must not be used in potentially hazardous locations such as flammable, explosive, chemical-laden or wet atmospheres.
6. Do not cover power cords with rugs or other fabric materials.
7. Safety precautions should be exercised during the installation, operation, and maintenance of this product.
8. Do not block or tamper with this product in any manner while it is in operation as it may cause electric shock, fire, or damage to this product.
9. Do not depend on the on/off programming as the sole means of shutting power from this product. Unplug the power cord before installing, servicing, or moving this product.
10. Do not operate this product while its cord is damaged, or if it malfunctions, has been dropped, or is damaged in any manner.
11. Do not stare directly at the LED lighting fixture. Doing so can cause damage to your eyes and compromise your eyesight.

KEY FEATURES

UIS™ COMPATIBILITY

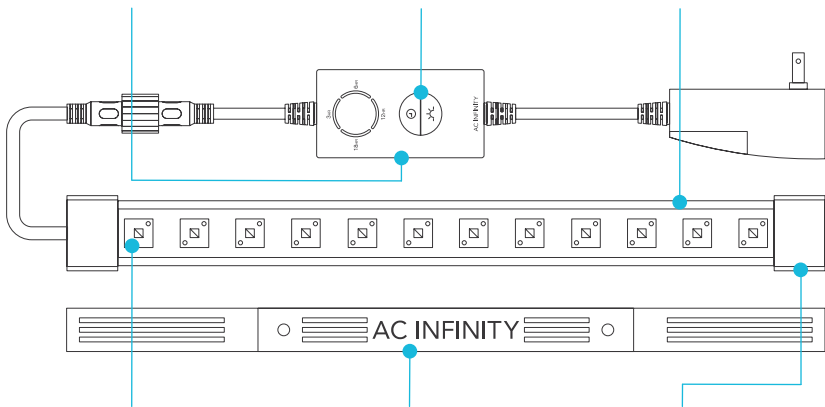
Compatible with select UIS controllers to access climate triggers, timers, grow cycles, scheduling, and transitions.

DIMMER AND TIMER

Adjust four light intensity levels for each grow stage and set four timer settings that repeat daily.

HUMIDITY-RESISTANT

Unibody construction tightly sealed to IP-65 standards to block liquid and dust from entering and seeping through.



LED LIGHTING

Full spectrum light bars crafted with Samsung LM301H diodes. UV light bars provide supplemental UV-A lighting.

VERSATILE MOUNTING

Cold-rolled steel bars with matte black powder coating provide sturdy bases for mounting on any grow tent.

EASY INSTALLATION

Magnetic ends on the LED light bars allow for quick and toolless mounting on any steel surface like tent frames.

PRODUCT CONTENTS

(X) = Full Spectrum Models, [X] = Ultra-Violet Model



LIGHT BAR
(SINGLE-CORDED)
(x1) [x1]



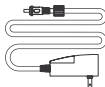
LIGHT BAR
(DUAL-CORDED)
(x3) [x1]



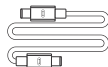
LIGHT
CONTROLLER
(x1) [x1]



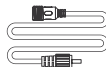
MOUNTING
BAR
(x4) [x2]



POWER
ADAPTER
(x1)



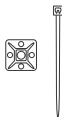
UIS EXTENSION
CORD (M-M)
(x1)



BAR EXTENSION
CORD (M-F)
(x3) [x1]



HOOK AND LOOP
CABLE TIES
(x4) [x2]



WIRE
MOUNT
(x8) [x4]



WOOD SCREWS
(WALL MOUNT)
(x9) [x4]

INSTALLATION

LIGHT BAR CHAIN ASSEMBLY

STEP 1

Connect the single-corded LED light bar's female port to the dual-corded LED light bar's male connector.

Repeat this with as many light bars as needed.

STEP 2

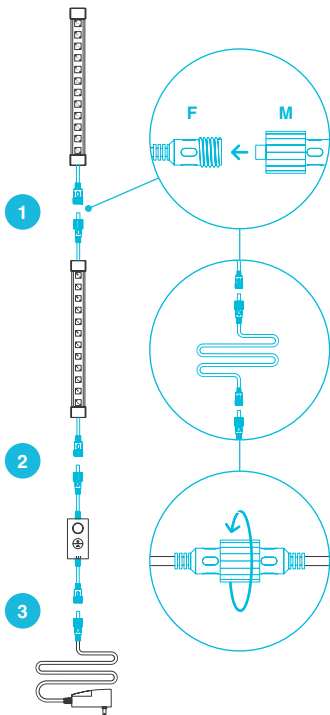
Connect the light controller's male connector to the other end of the dual-corded LED light bar.

STEP 3

Connect the power adapter to the light controller.

EXTENDING THE CHAIN

You may connect the included bar extension cord in between any link in this light bar chain to lengthen it. Secure all connections using the twist-on pieces.



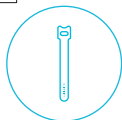
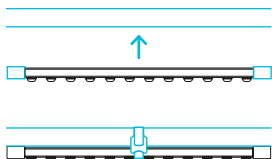
INSTALLATION

LIGHT BAR MOUNTING

POLE MOUNTING

You may magnetically mount the light bar(s) directly on your grow tent steel pole.

You may also use the included hook and loop cable ties around the light bar(s) and mounting bar to adjust the lighting angle and for extra security.

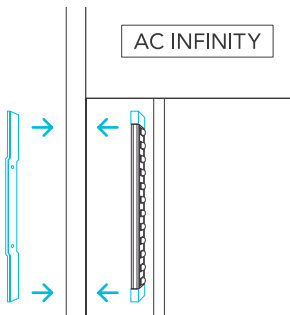


CANVAS MOUNTING

You may magnetically mount the light bar(s) to the wall or ceiling of your grow tent.

Set the included mounting bar(s) on the outer side of your tent. Place the light bar(s) at the exact spot on the inner side.

Once mounted, you can move the light bar and mounting bar connection along your grow tent surface as needed.

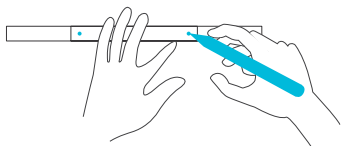


INSTALLATION

LIGHT BAR MOUNTING

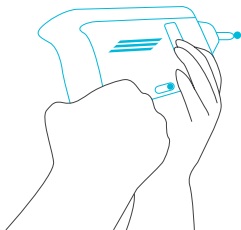
STEP 1 — WALL MOUNTING

Make sure your mounting area is free from obstruction. Use a mounting bar to mark your drilling holes with the logo facing the wall.



STEP 2 — WALL MOUNTING

Drill holes into the marked locations.



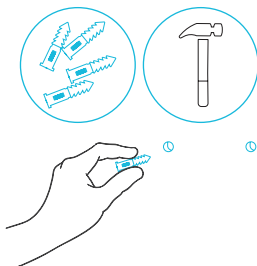
INSTALLATION

LIGHT BAR MOUNTING

STEP 3 — WALL MOUNTING

If you are mounting onto anything other than a wood support or stud, insert the included four wall anchors into the drilled mounting holes.

You may need to use a hammer to secure them through the holes.

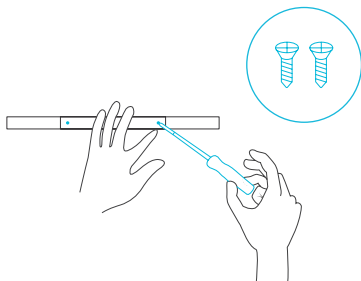


STEP 4 — WALL MOUNTING

Align the mounting bar holes with the wall anchors, making sure the logo faces the wall.

Screw or drill in the wood screws to secure the mounting bar.

Repeat steps 1-4 as needed.



INSTALLATION

LIGHT BAR MOUNTING

STEP 5 — WALL MOUNTING

Set the light bar(s) magnet ends onto the mounting bar(s).

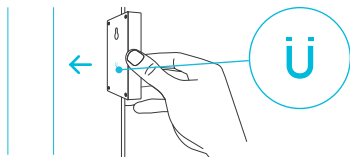


INSTALLATION

CONTROLLER MOUNTING

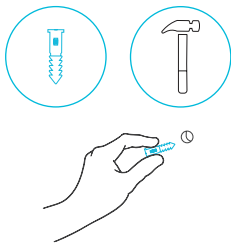
MAGNET MOUNTING

You may magnetically mount the light controller onto any steel surface.



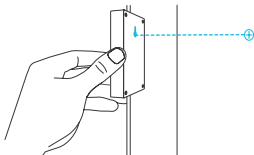
STEP 1 — WALL MOUNTING

Locate a spot free of obstruction and secure the anchor into your wall. Twist the wood screw into the anchors.



STEP 2 — WALL MOUNTING

Use the mounting hole located on the back of the controller for wall mount.

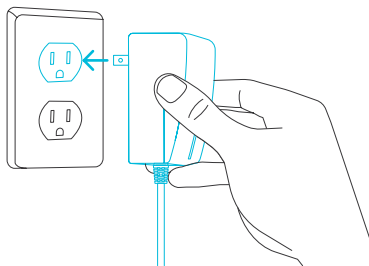


INSTALLATION

POWERING

STEP 1

Plug the power adapter into a wall outlet.



PROGRAMMING

1. LIGHTING

Pressing the light button will increase the light intensity level in 10/30/60/100% increments, displayed with white LED indicators. Pressing this button at 100% intensity will cycle to 0%.

Holding the light button will shut off the lighting. Pressing it again will return the light intensity to its previous setting.

2. TIMER

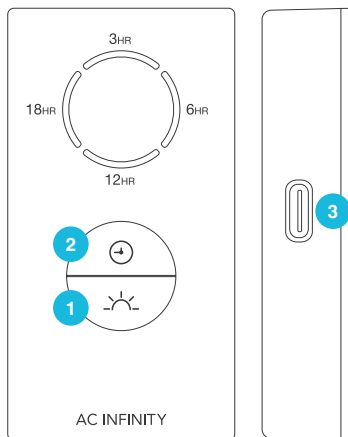
Pressing the clock button will set the timer in 3/6/12/18-hour increments, displayed with orange LED indicators.

Within a 24-hour cycle, lighting will be active for the amount of time set here (ex. 3 hours for a 3HR timer). It will deactivate for the rest of the 24-hour cycle (ex. 21 hours).

Pressing the clock button at the 18HR setting will deactivate the timer, cycling from 3HR onwards when pressing this button again.

3. UIS CONNECTION

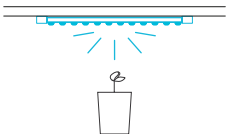
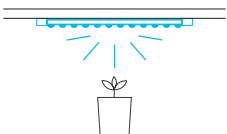
Refer to the programming section of your selected UIS controller for programming instructions.



STARTER GUIDE

FULL SPECTRUM LIGHTING


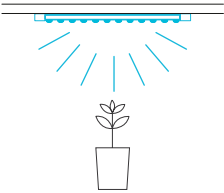

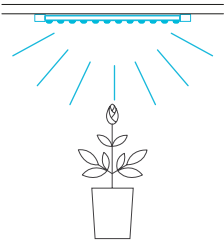
The charts below offer suggested mounting heights and light intensities for each stage in the growing process. These factors will vary based on the plant you are growing. Height refers to the minimum recommended distance from the canopy (tip of the plant) to the light.

GROW STAGE	Height	Intensity	Set-Up
Seedling Stage	1 IN.	10%*	
Vegetative Stage	2 IN.	30%*	

*Also recommended for plant propagation.

STARTER GUIDE

FULL SPECTRUM LIGHTING

GROW STAGE	Height	Intensity	Set Up
Vegetative Stage	6 IN.		
Flowering Stage	6 IN.		

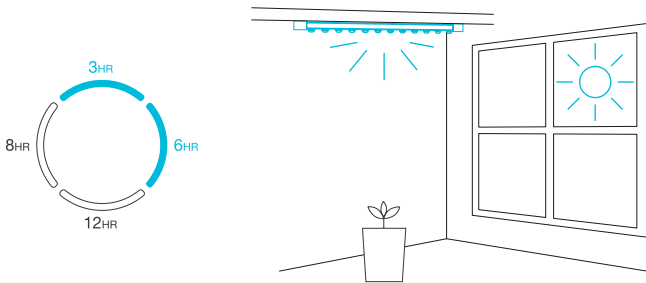
STARTER GUIDE

FULL SPECTRUM LIGHTING

SETTING ACTIVE LIGHTING TIMERS

The included controller can set timers in 3/6/12/18-hour increments.

Use either the 3HR or the 6HR timer to extend your plant's daily exposure to light, in conjunction with natural sunlight, or when growing plants that don't require extended exposure to lighting.

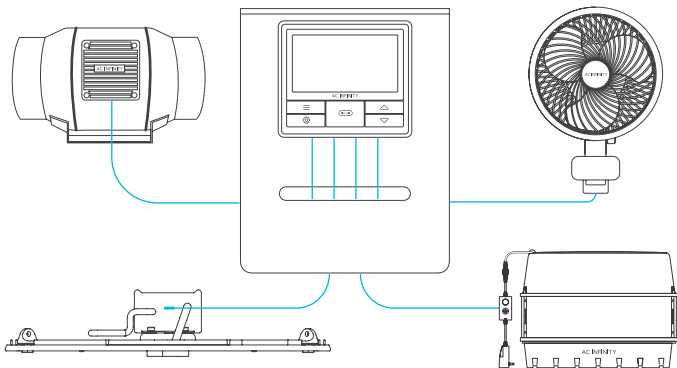


Use either the 12HR or the 18HR timer to complement common light cycles used to grow high yield plants indoors. This will also allow for your lighting to sync with your grow set-up's existing lighting, so that they may activate at the same time.

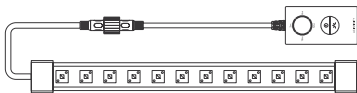
CONNECTING TO UIS™

AN INTERCONNECTED GROW SETUP

The Universal Infinity System (UIS) is a series of controllers and devices that come together to create a fully automated system. UIS enables our controllers to simultaneously connect with various grow equipment such as inline fans, clip-on fans, and grow lights. Advance UIS controllers can provide each connected UIS device with their own automated programming like temperature, humidity, cycles, schedules, and dynamic levels, while also pairing with the AC Infinity app.



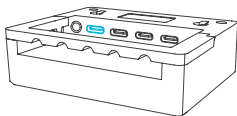
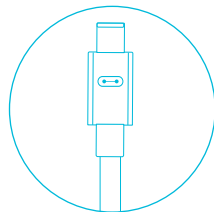
CONNECTING TO UIS™



IONBEAM LED grow lights can connect with select smart controllers as part of an integrated system using the included UIS extension cord.

CONNECTING TO UIS CONTROLLERS

Use the included UIS M-M extension cord to connect the LED light bar(s) to your selected UIS controller via the light controller's side port.

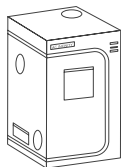


Your selected UIS controller will override all of the light controller's onboard settings when connected in this manner.

AC INFINITY PRODUCTS

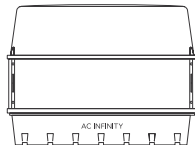
Advance Grow Tents

The CLOUDLAB series is a line of grow tents designed to create ideal growing conditions and facilitate indoor plant cultivation year-round. Features 2000D thick oxford canvas lined with inner diamond patterned mylar that maximizes grow light luminosity, and a reinforced frame with 150 lb. weight capacity. Includes a mounting plate to install your AC Infinity controller onto.



Humidity Dome

The humidity dome is designed to maintain moisture levels to create the ideal environment for seed germination. Each kit includes a base tray and seedling tray with a dome that is built with adjustable vents to control humidity levels. Height extender also included to provide a higher ceiling for propagation applications.



Seedling Mats

The SUNCORE series is a line of seedling mat designed to improve germination success and accelerate your seeds' growth process by emitting steady heat. Each mat is lined with an innovative far-infrared film that provides even heating distribution.



Discover the latest innovations in cooling and ventilation at acinfinity.com

WARRANTY

This warranty program is our commitment to you, the product sold by AC Infinity will be free from defects in manufacturing for a period of two years from the date of purchase. If a product is found to have a defect in material or workmanship, we will take the appropriate actions defined in this warranty to resolve any issues.

The warranty program applies to any order, purchase, receipt, or use of any products sold by AC Infinity or our authorized dealerships. The program covers products that have become defective, malfunctioned, or expressively if the product becomes unusable. The warranty program goes into effect on the date of purchase. The program will expire two years from the date of purchase. If your product becomes defective during that period, AC Infinity will replace your product with a new one or issue you a full refund.

The warranty program does not cover abuse or misuse. This includes physical damage, submersion of the product in water, incorrect installation such as wrong voltage input, and misuse for any reason other than its intended purpose. AC Infinity is not responsible for consequential loss or incidental damages of any nature caused by the product. We will not warrant damage from normal wear such as scratches and dings.

For more information about our dealers and distributors, please contact our customer service at support@acinfinity.com or (626) 838-4656 Monday to Friday (9:00 am to 5:00 pm PST).



If you have any issues with this product, contact us and we'll happily resolve your problem or issue a full refund!

COPYRIGHT © 2022 AC INFINITY INC. ALL RIGHTS RESERVED

No part of the materials including graphics or logos available in this booklet may be copied, photocopied, reproduced, translated or reduced to any electronic medium or machine readable form, in whole or in part, without specific permission from AC Infinity Inc.

www.acinfinity.com